



## Santa Rosa Quilt Guild

### September Block of the Month

Due October 3, 2013

## Sonoma Star



Our "Never Enough Nine Patch" this month is a study in red, black and white. A mix of four patch, half square triangles and quarter square triangles, **Sonoma Star** is another original pattern designed for SRQG Block of the Month. We hope you enjoy the results of this striking color combination.

Unfinished block is 12-1/2" square; finished block is 12" square . Sew scant 1/4" seams.

#### Fabric:

Fabric #1: white tone-on-tone

A. 1 - 5-3/4" square

B. 1 - 2-1/2" x 20" strip

Fabric #2: red mixed print

C. 1 - 5-3/4" square

Fabric #3: darker red print

D. 2 - 5-1/2" square

Fabric #4: black print

E. 1 - 4-1/2" square

F. 1 - 2-1/2" x 20" strip



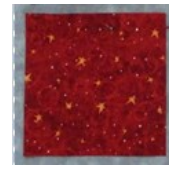
1A



1B



2C



3D



4E



4F

#### Patch Assembly:

##### Four-patch

1. Sew 1B and 4F together, press to dark.
2. Cut sewn strip-sets into 2-1/2" slices.  
**Make 8.**
3. Sew 4-patch as shown Square to 4-1/2".  
**Make 4.**



1



2



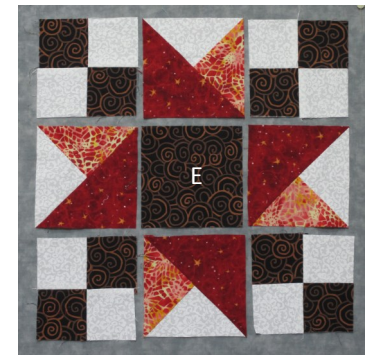
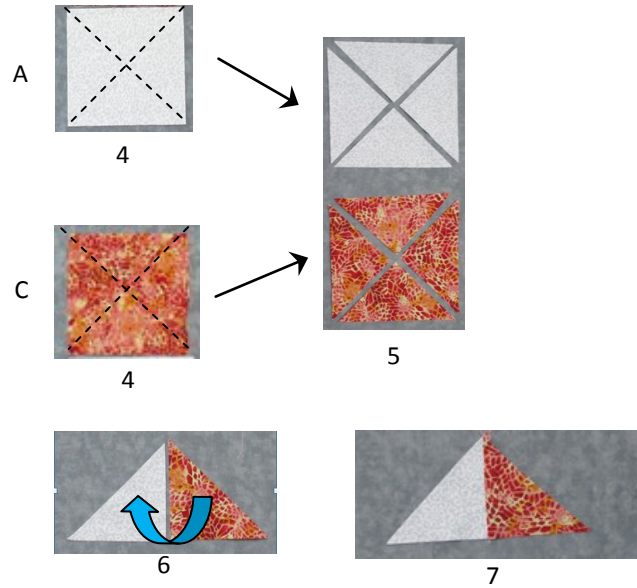
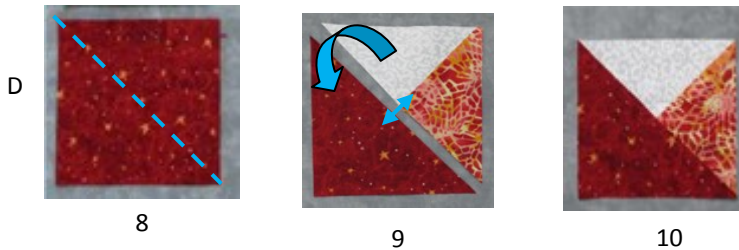
3

## Patch Assembly (contd.)

Red patch:

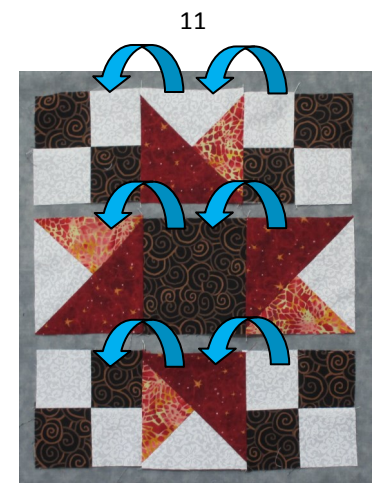
4. Cut pieces A and C on each diagonal as shown.
5. The result is 4 sets of quarter square triangles.
6. Set all triangles with the red on the right.
7. Sew triangles together, press to dark.
8. Cut 2 pieces #3D once diagonally.
9. Be sure to center the quarter square triangle with the center of the half square triangle.
10. Sew right sides together. Press to dark. Square to 4-1/2"

Make 4.



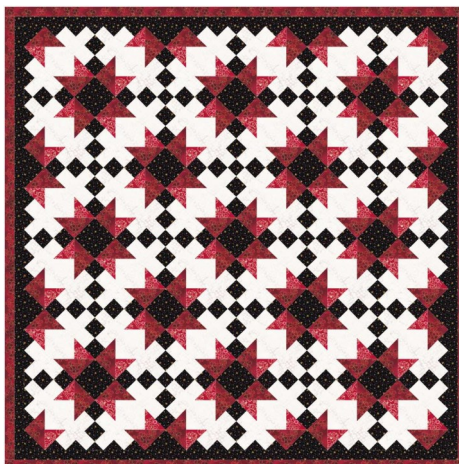
Block assembly:

11. Using layout at right, place the patches as shown with #4E in the center. Be certain the black and white 4-patch has black in the outside corner.
12. Create rows as shown by arrows. Press to 4-patch and center.
13. Sew rows together to finish the block.



Have fun with the **Sonoma Star** block.

If you win the blocks, you might decide to set the blocks on point and create something like



13